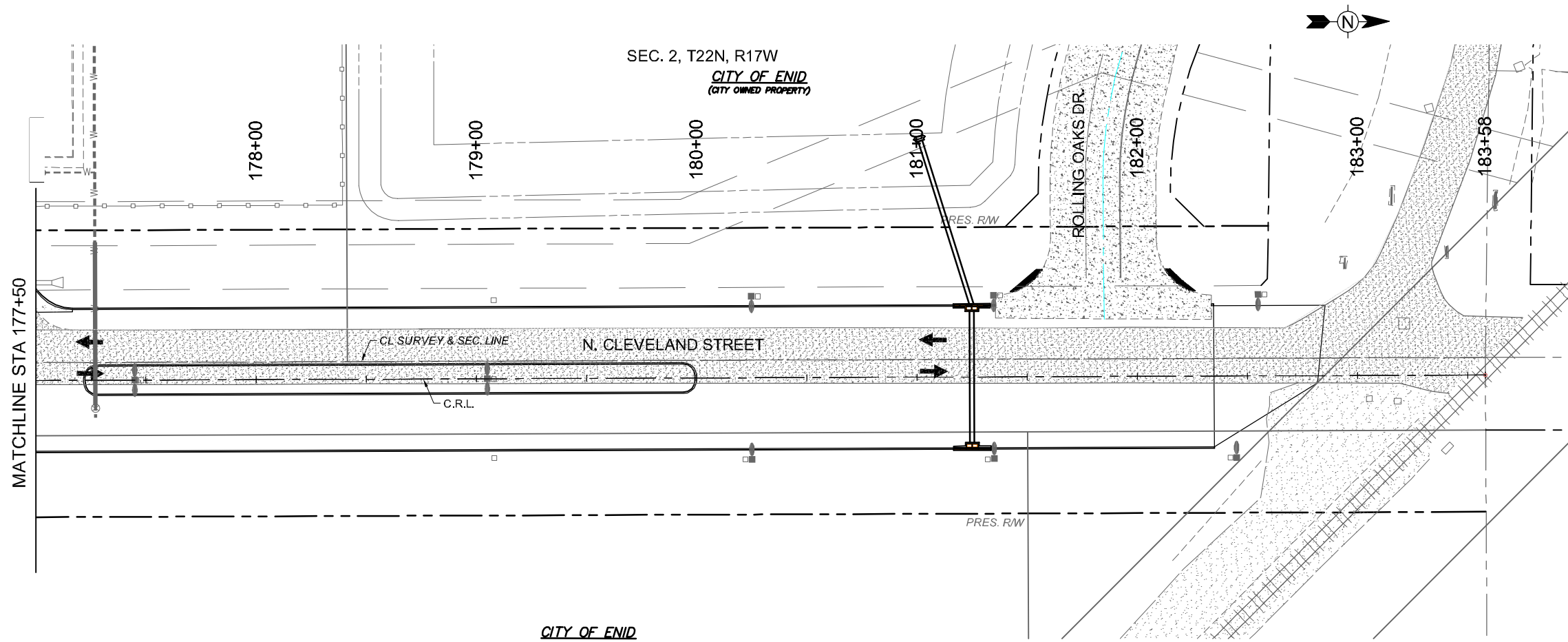


OKLAHOMA DEPARTMENT OF TRANSPORTATION					
FED. ROAD DIST. NO.	STATE	STATE JOB NO.	FISCAL YEAR	SHEET NO.	TOTAL SHEETS
4	OKLA	17020(07)		20	
DESCRIPTION			REVISIONS		DATE



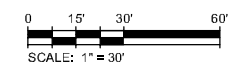
CITY OF ENID

- NOTES:**
- WHERE WORK OCCURS IN CLOSE PROXIMITY TO TRAFFIC, UTILIZE THE 2009 MUTCD FIG. 6H-10 FOR "LANE CLOSURE ON A TWO-LANE ROAD USING FLAGGERS (TA-10)" DURING OFF-PEAK DAYLIGHT HOURS AS NEEDED.
  - REFERENCE ODOT TRAFFIC CONTROL STANDARDS TCS1-1, TCS2-1, TCS3-1, TCS4-1, TCS5-1, TCS6-1 & ROADWAY STANDARD PDT-1.
  - SEE ODOT TRAFFIC CONTROL STANDARD TCS21-1 FOR CONSTRUCTION ZONE PAVEMENT MARKING.

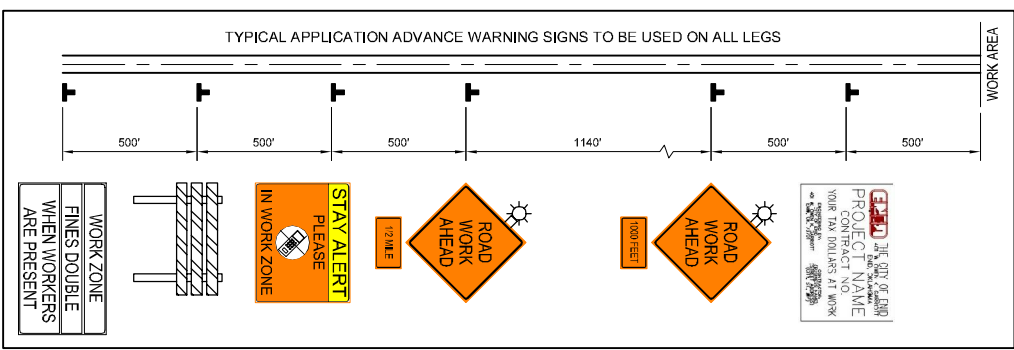
**LEGEND**

- EXISTING ROADWAY
- WORK COMPLETED PREVIOUS PHASE
- WORK AREA
- TYPE III BARRICADE w/ TYPE "A" WARNING LIGHTS R11-2 (LANE)
- DRUMS w/ W1-8(L)
- CHANNELIZING CONE
- SIGNAGE
- DIRECTION OF TRAVEL

CONTRACTOR SHALL MAINTAIN ACCESS TO ALL BUSINESSES AND DRIVEWAYS



- SUGGESTED SEQUENCE OF CONSTRUCTION**
- PHASE 1:**
- RELOCATE EXISTING FENCING AND UTILITIES
  - INSTALL PIPES P-42N, P-42S, P-46, & P-52. CLOSE N. CLEVELAND STREET TO TRAFFIC FOR SHORT DURATION TO DETOUR N. CLEVELAND STREET TRAFFIC TO N. OAKWOOD ROAD. REFERENCE THE 2009 MUTCD FIGURES 6H-9 & 6H-20.
  - USE CONSTRUCTION MARKINGS TO SHIFT TRAFFIC OVER TO WEST



DESIGN	X
DRAWN	CWT
CHECKED	JDH
APPROVED	JDH
SQUAD	Tt

**N. CLEVELAND STREET**

OKLAHOMA DEPARTMENT OF TRANSPORTATION

**TCP - SEQUENCE OF CONSTRUCTION**

**PHASE 1 - SHEET 2**

STATE JOB NO. 17020(07) SHEET NO. 20

CITY PROJECT R-1311B GARFIELD COUNTY

4/21/2017 6:04:41 PM - P:\2771\21\131-2771\2-1300\1\CAD\SHSHEET\FILES\CLEVELAND BLVD PLANS\CONSTRUCTION SEQUENCE PH1.DWG - SCHUMACHER, MIKE